



MARKET & CONFERENCE
 MONDAY – THURSDAY
 1.26.09 – 1.29.09
 MANDALAY BAY RESORT
 LAS VEGAS NEVADA

Suites & Function Space Options & Fees

Exhibit Suites (one bedroom suite, 750 sq. ft.) and the Function Space are located on floors 3 – 6 in THEhotel. There is one permanent boardroom per floor. These rooms may be used for:

- Exhibition
- Screenings
- Hospitality
- Meetings

Suite Options & Fees

| Suites | NATPE Fee | THEhotel (5) night min. suite charge | THEhotel required security deposit | GRAND TOTAL |
|-----------------------|-----------|---|------------------------------------|-------------------|
| Standard Suite | \$5,000 | \$2,452.05 <small>(\$450+ 9% tax per night)</small> | \$350 | \$7,802.05 |
| V Suite | \$6,000 | \$2,452.05 <small>(\$450 + 9% tax per night)</small> | \$350 | \$8,802.05 |

The NATPE 2009 Suite Exhibit Rate includes:

- NATPE 2009 Exhibit Fee
- THEhotel 5 night minimum suite charge
- THEhotel \$350 deposit per suite (refundable by THEhotel after THEhotel performs a check-out inspection)
- All exhibit suite participants will receive three (3) complimentary registrations per suite

Please note there will be no suites blocked for arrivals on Saturday, January 24, or Sunday January 25.

All exhibit suites must be rented for a minimum of five (5) days, check-in is Monday, January 26, at 3pm and check-out is Saturday, January 31, at 11am

Please note there will be no removal of any furniture in any suite at the facility. Should additional phone or data lines be needed in any of the rooms, they will need to be ordered one day prior to the event.

Function Space Options & Fees

| Suites | NATPE Fee | THEhotel required security deposit | GRAND TOTAL |
|-----------------------|-----------|------------------------------------|--------------------|
| Function Rooms | \$13,300 | \$350 | \$13,650.00 |

Please note Function space is blocked for Saturday, January 24, 8am arrival and departure by 5pm Friday, January 30, 2009.

*For daily rates please contact the exhibition department.

The NATPE 2009 Function Space Rate includes:

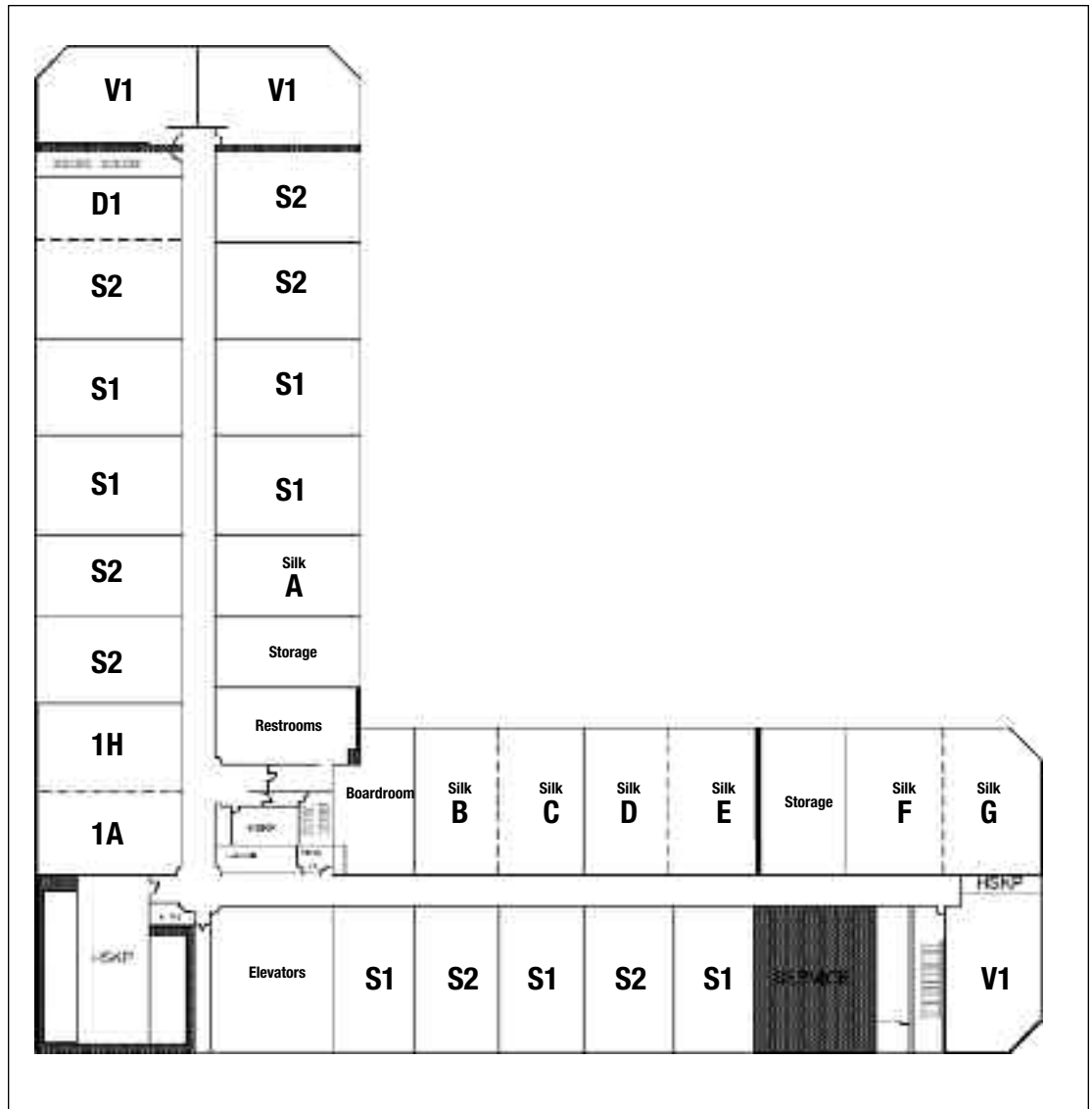
- NATPE 2009 Exhibit Fee
- \$350 deposit per suite (refundable by THEhotel after THEhotel performs a check-out inspection)
- Three (3) complimentary registrations per suite

**THEhotel
FLOOR 3**

NOTE:
Floors 4, 5 and 6 have
identical layout

KEY

- D1 – Deluxe King
- S1 – Suite King
- S2 – Suite Queen
- 1A – Accessible King Suite
- 1H – King Suite Hearing Impaired
- V1 – V Suite



| ROOM NAME | SQ FT | DIMENSION | CEILING | THEATRE | CLASS ROOM | ROUNDS | RECEPTION | CONFERENCE | HOLLOW SQUARE |
|-------------------------|-------------|-------------|---------|---------|------------|--------|-----------|------------|---------------|
| THEhotel Silk Boardroom | 578 sq. ft. | 23' x 25' | 7'10" | N/A | N/A | N/A | N/A | 16 | N/A |
| THEhotel Silk A | 600 sq. ft. | 24' x 25' | 7'10" | 40 | 30 | 40 | 40 | 17 | 22 |
| THEhotel Silk B | 600 sq. ft. | 24' x 25' | 7'10" | 40 | 30 | 40 | 40 | 17 | 22 |
| THEhotel Silk C | 600 sq. ft. | 24' x 25' | 7'10" | 40 | 30 | 40 | 40 | 17 | 22 |
| THEhotel Silk D | 600 sq. ft. | 24' x 25' | 7'10" | 40 | 30 | 40 | 40 | 17 | 22 |
| THEhotel Silk E | 600 sq. ft. | 24' x 25' | 7'10" | 40 | 30 | 40 | 40 | 17 | 22 |
| THEhotel Silk F | 680 sq. ft. | 27'2" x 25' | 7'10" | 40 | 30 | 40 | 40 | 19 | 25 |
| THEhotel Silk G | 680 sq. ft. | 27'2" x 25' | 7'10" | 40 | 30 | 40 | 40 | 19 | 25 |

**Floors 3, 4, 5 & 6 have the same meeting room space

Silk - 3rd Floor Mahogany - 4th Floor Granite - 5th Floor Marble - 6th Floor

All Boardrooms have permanent conference tables

Classroom and conference seating are based on three people per 6' table or four people per 8' table

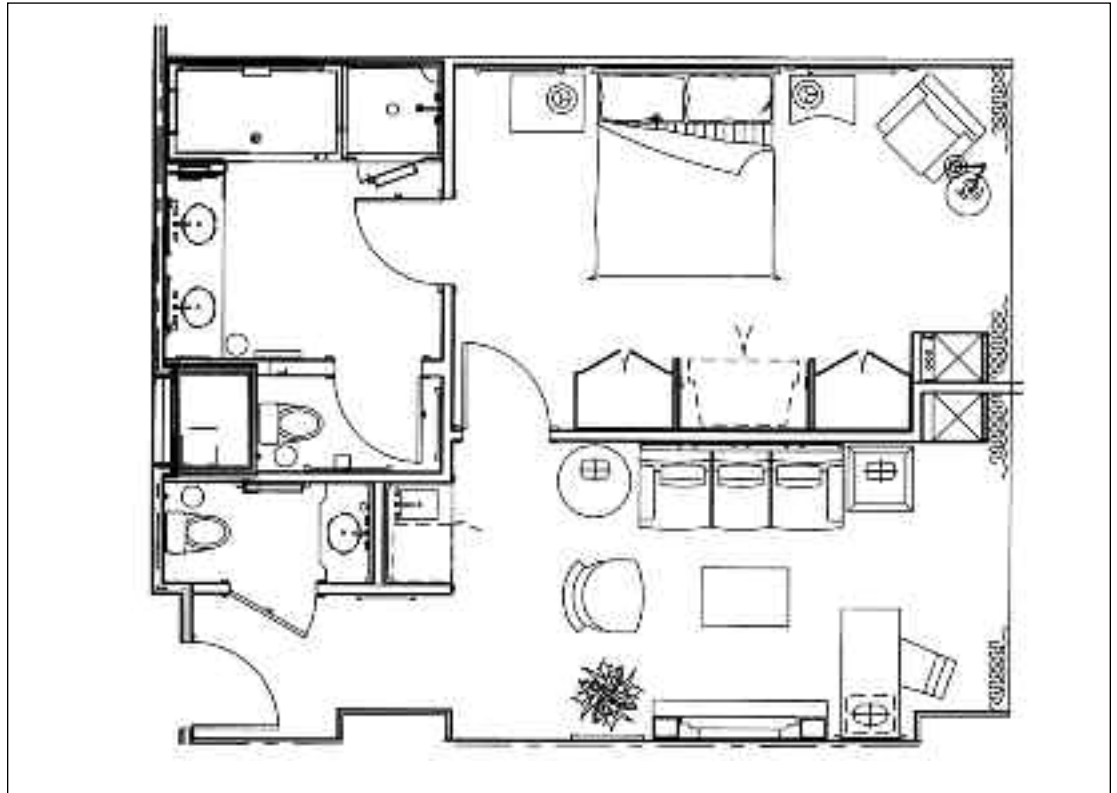
Banquet seating is based on twelve people per 72" round without buffets

Capacities do not allow for staging, audio/visual, buffets or additional catering/décor requirements

Ceiling height of 7'10" does not allow room for risers or theatrical lighting

King Suite Plan

750 Total sq. ft.



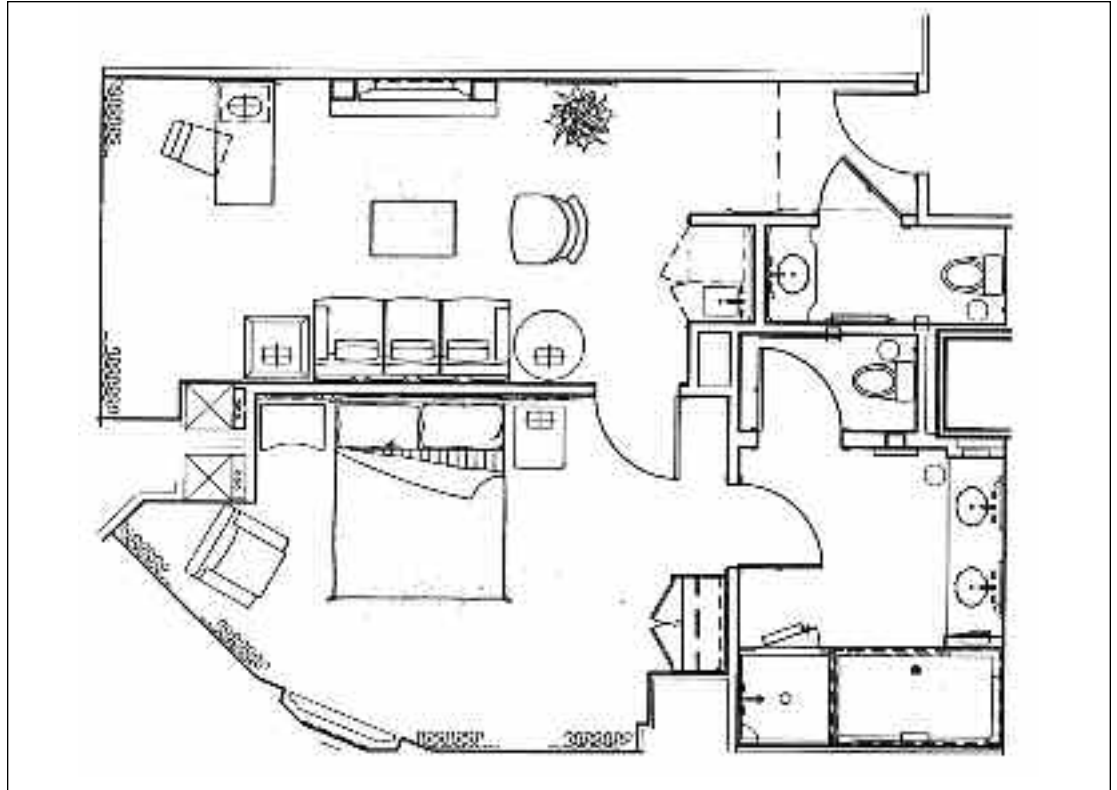
Queen Suite Plan

693 Total sq. ft.
Functions ~ 10 Guests



V Suite Plan

741-755 Total sq. ft.
Functions ~ 12 Guests



→ CONTACT US

NATPE EXHIBITION DEPARTMENT
5757 Wilshire Blvd.
Penthouse 10
Los Angeles, CA 90036

TEL: 310-857-1610
FAX: 310-453-5258
E-MAIL: exhibitinfo@natpe.org
WEB: www.NATPE.org